

Webinar

Quality 4.0:

A preventive & future proof
approach on quality management



September 9, 2021



Speaker

Peter Warner

About our speaker

Peter's an apparel, footwear, and accessories industry specialist with broad range of skills in senior management and supply chain operations



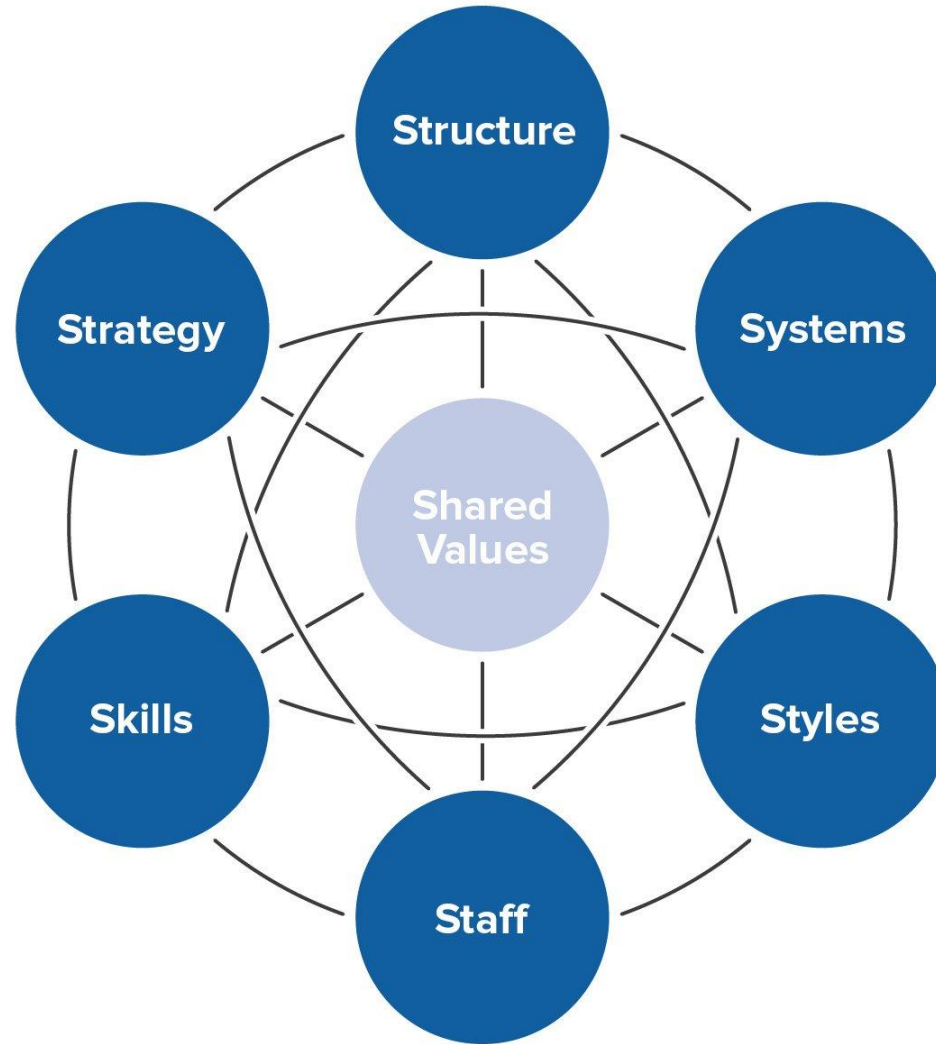
Peter has more than 30 years of experience in international global sourcing (strategic sourcing structure) and management of product development structures.

2018 - Present

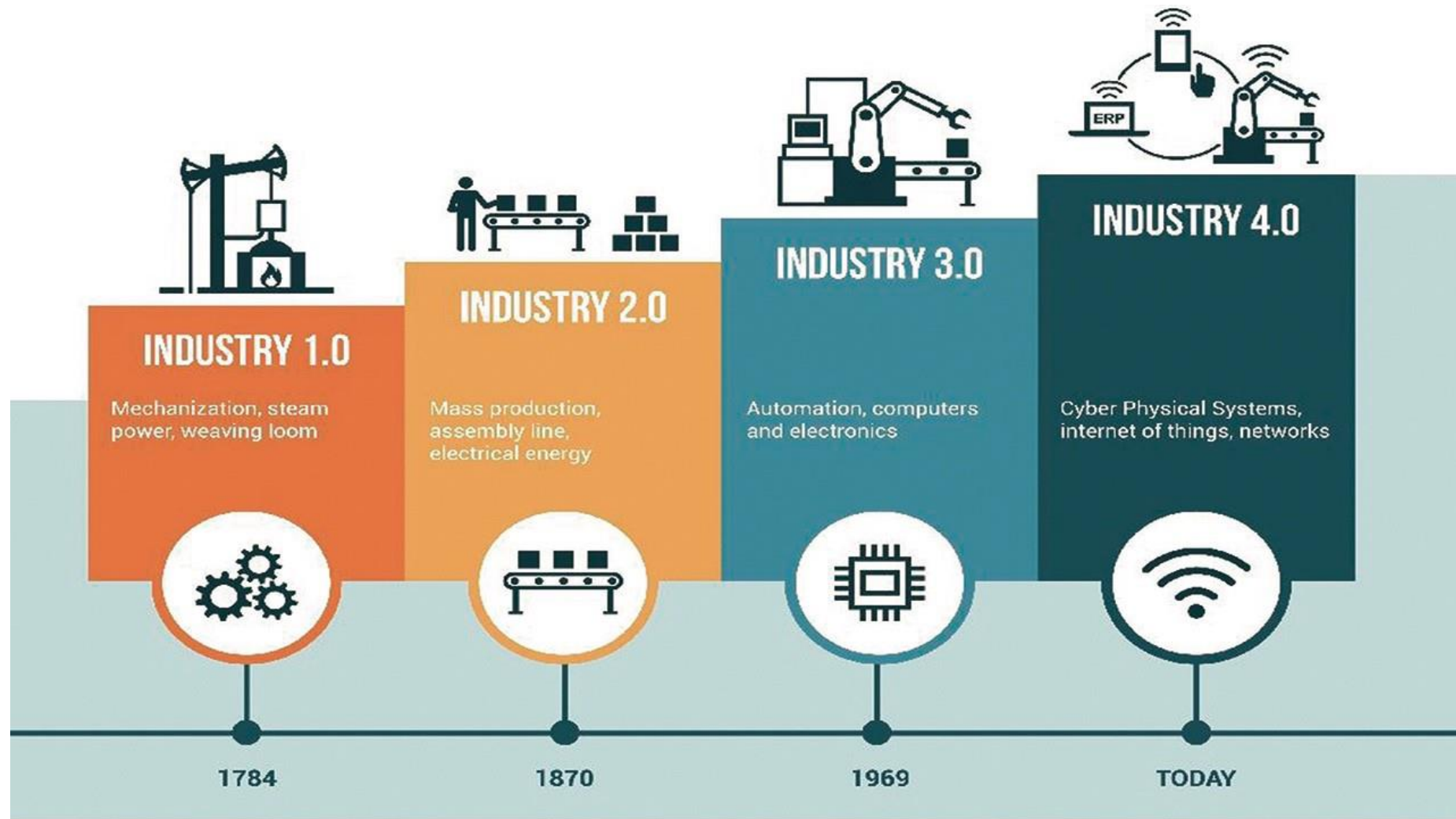
- Kalypso, Executive in Residence
- Allbirds, Advisor in Residence - Procurement & Global Sourcing
- Serai, Strategic Advisor - SVP Strategic Relationships

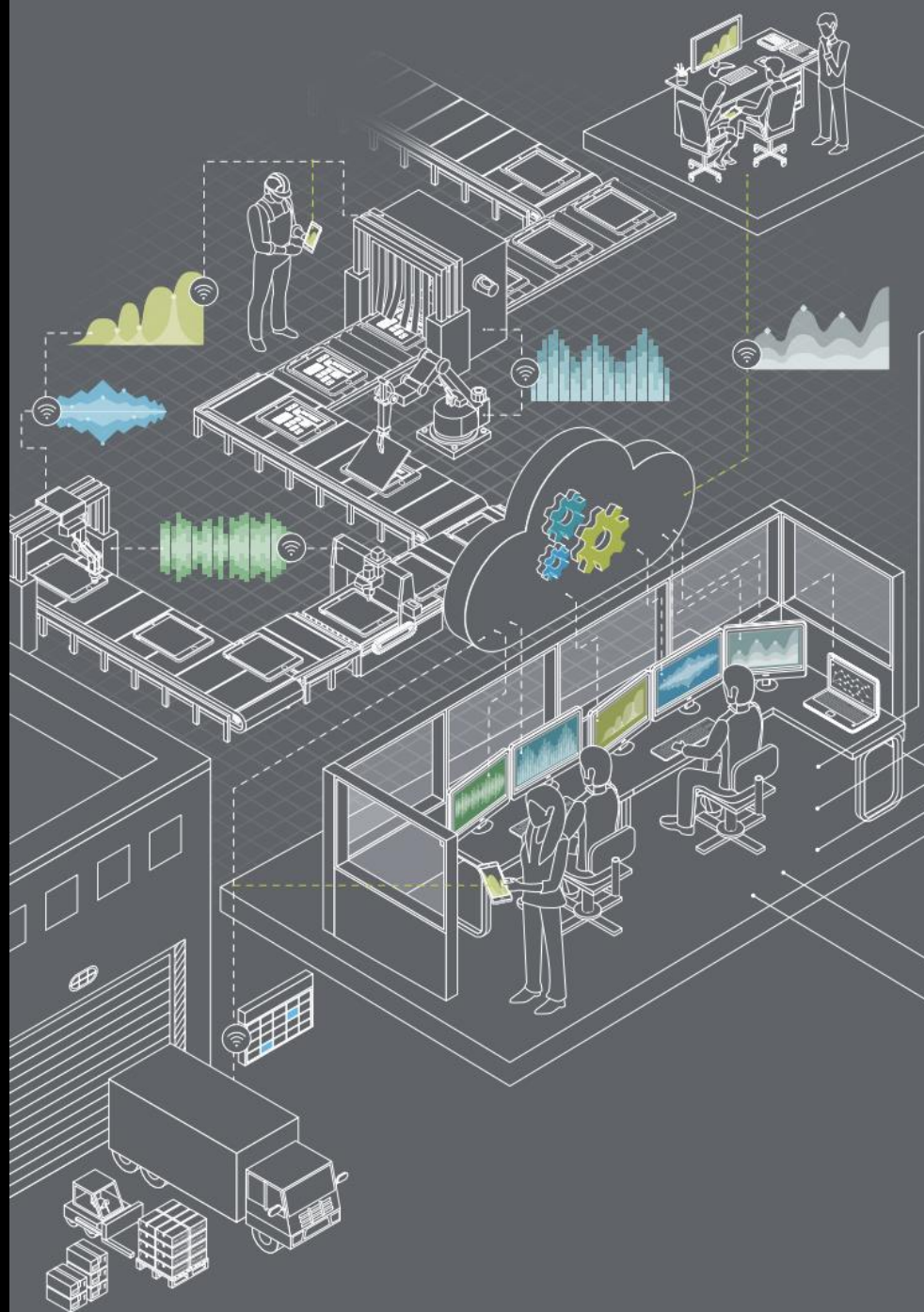
About our speaker

- '20 to Present: **Serai**, Strategic Advisor - SVP Strategic Relationships
- '19 to Present: **Allbirds**, Advisor in Residence - Procurement & Global Sourcing
- '18 to Present: **Kalypso**, Executive in Residence
- '17 to 2018: **XTERRA Triathlon**, CEO
- '14 to '17: **Kohl's Inc.**, SVP Global Product Services
- '12 to '14: **Cannondale Sports Unlimited (Dorel Inc.)**, SVP Supply Chain & Operations
- '11 to '12: **The Children's Place Inc.** SVP Global Sourcing and Operations
- '08 to '11: **Liz Claiborne Inc.** SVP Global Sourcing and Operations
- '05 to '08: **Gap Inc. (Banana Republic)** SVP Banana Republic, Global Sourcing and Production
- '04 to '05: **Ann Taylor Inc.** SVP, Global Sourcing and Production
- '03 to '04: **Ecko Unlimited.**, President, Global Sourcing
- '97 to '03: **Foot Locker Inc. (Foot Locker, Foot Locker Europe, Champs, Lady & Kids Footlocker)** SVP
- '86 to '97: **Nike Inc.** Numerous Roles



Source: McKinsey & Co





CONNECTED

- Continuously pull traditional datasets along with new sensor and location-based datasets
- Real-time data-enabling collaboration with suppliers and customers
- Collaboration across departments (e.g., feedback from production to product development)

OPTIMIZED

- Reliable, predictable production capacity
- Increased asset uptime and production efficiency
- Highly automated production and material handling with minimal human interaction
- Minimized cost of quality and production

TRANSPARENT

- Live metrics and tools to support quick and consistent decision making
- Real-time linkages to customer demand forecasts
- Transparent customer order tracking

PROACTIVE

- Predictive anomaly identification and resolution
- Automated restocking and replenishment
- Early identification of supplier quality issues
- Real-time safety monitoring

AGILE

- Flexible and adaptable scheduling and changeovers
- Implementation of product changes to see impact in real time
- Configurable factory layouts and equipment

The background is a solid blue color with a complex, abstract pattern of thin white lines and small white dots. These lines and dots form a network-like structure, with some lines connecting dots to create various geometric shapes like triangles and polygons. The pattern is dense and covers the entire blue area.

| Final remarks Q&A